

ITMACS

portfolio



 I.T. Management and Consulting Services. Fall 2008



“We believe that it is not enough for technology in business to be stable and efficient, but also... the pocesses by which you use this technology must also be stable and efficient”



PORTFOLIO



Contents

Introduction 4

Current Projects 4

Previous Projects 6

Introduction

I.T. Management and Consulting Services (ITMACS), is a technology based services enterprise delivering IT-based solutions to businesses in the Greater St. John's area. From IT consulting to web-based application development, we provide "just-the-right" kind of solution to fit our clients needs.

In today's environment, computers and technology play a key role. Having the best computers and newest software is not enough, or necessary. Systems change too quick and at the blink of an eye, it may seem that last years technology is now out of date. There is a need for something more.



We believe that to create a proficient environment where technology stands to play a key role, a balance must be struck. A balance between people, technology and service. Understanding these three key areas, and their relationships to each other, is essential to implementing and maintaining technology in any environment.

We further extend this model with a philosophy that our clients are not just our clients, but they are our partners. Partners working together towards a common goal.

If you would like to know more about ITMACS and how we can better serve you, please contact us.

Current Projects

Boy's and Girl's Club St. John's Membership Database

The Boy's of Girl's Club – St. John's, currently uses a simple tally system of membership numbers to track membership attendance on a day-to-day basis, eventually entered into a spreadsheet to add up the tallies for each individual. A separate MS-Access database is used to store information regarding each individual (contact information, medical problems and allergies, etc...).

These processes are to be replaced with a database system that will unify these tasks and provide better reporting mechanisms. Information may be entered into the system via multiple interfaces: kiosk type terminal for attendance purposes and a full-service interface for data entry, reporting and billing. The system may also allow parents to track the attendance of their children and costs of services for the month. In the interest of security, the system will reside on a Linux-based server currently in-house. Attendance information will be exported to an external database/web interface to allow parents access to information.

Status - Data Entry/Testing/Report Design

Key Features

- + Internal web-based interface built using PHP, MySQL and the Zend Framework.
- + Simple Kiosk-type user interface for tracking daily membership attendance
- + Storage of necessary member information (contract info, medical problems)
- + Reports and graphs created with XML/SWF Charts
- + Parents can find information on their child. For example, if they had attended that day.

St. Teresa's Parish Church Management Software

The current management software has a variety of logistical redundancies in information management, a proprietary interface for data entry and, inferior reporting mechanisms. The current system is built upon an unsuitable data model, and as well, uses a Dos-based Clipper-type system.

Design and implementation of a new system will reduce redundancies. This implementation will allow the use of best-practice logistic processes for information management and reporting features in the office environment. New office procedures have to be realized to increase productivity.

Case Example

The current system has mechanisms to hold sacrament information, such as, baptisms and marriages. As there is no way to create certificates, sacramental information has not entered into the system. These records are currently kept on paper and the information is hand typed on a pre-printed certificate.

The new system will hold templates for certificates that may be printed upon request. The majority of records are held on paper date back over 50 years. Old records will be entered upon a request for a certificate or on a casual basis, as down time permits.

Status - Training

Key Features

- ✦ In house html-based interface build upon PHP, MySQL, and Zend Framework.
- ✦ Unified database with a superior relational data model.
- ✦ Track collection information for accounting and tax receipt purposes.
- ✦ Track membership.
- ✦ Print certificates (straight-to-printer)
- ✦ Reports and graphs created with Microsoft Access via ODBC



Previous Projects

Literacy NL

Website – www.literacynl.com

Summary

Implement a visually simple (easy to read) Content Management System based website to allow staff to update materials. Site must also contain a map of Literacy programs/groups and host a forum.

The online map uses a variety of technologies to create a user updated map. Among these technologies are the Google Map API, Geocoder.ca, and MySQL and PHP. When a new group is entered into the database via the web interface, address information is sent to geocoder.ca for translation into geographic coordinates (latitude and longitude). This information is stored in the database, along with address and contact information for that particular group. When the map is accessed via the website, all group information is read from the database and points are plotted on a map, using PHP and the Google Map API.



Key Features

- + Joomla Content Management System.
- + phpBB2 Bulletin Board/Forum.
- + Custom built templates for Joomla and phpBB2.
- + Custom built user managed web-based map application.

Buckmaster's Circle Community Centre

Postfix Daemon/Fax Database

Summary

Create a web extension to Fax2Email system for incoming faxes. Emails sent from Fax2Email gateway are received by Postfix MTA and are sent to the custom build postfix-fax daemon via Postfix transport mechanisms. Fax daemon is then responsible for extracting file from email, conversion to pdf, saving pdf to disk and entering information into the database, regarding the incoming fax.

Key Features

- + Office wide access to incoming faxes using .htaccess based authentication
- + Reduction in paper usage/comsumables
- + Security
- + Faxes save in portable PDF format
- + Does not use dedicated phone line resulting in yearly savings of over \$500.00

Association of Early Childhood Educators Newfoundland and Labrador Website – www.aecenl.ca

Summary

Implement a Content Management System based website to allow staff to update material on a regular basis and allow members to access membership materials. Site must also host an updatable calendar and private forum.

Key Features

- ✦ Joomla Content Management System
- ✦ Custom built Joomla template
- ✦ phpBB2 Bulletin Board/Forum
- ✦ VTCalendar calendar application

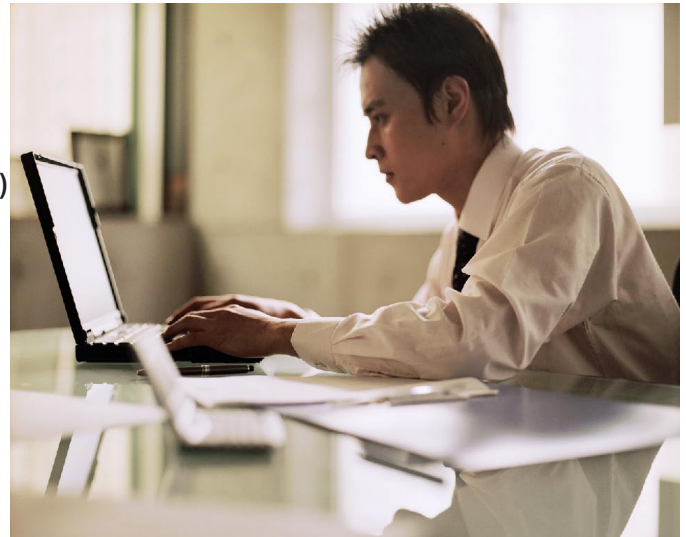
Certification and Membership Databases (AECENL)

Summary

Creation of two mutually exclusive MS Access Databases, based on previous databases built upon inferior data models.

Key Features

- ✦ Update of previous data model (non-relational)
- ✦ Different data abstraction methodologies
- ✦ Improved data entry and report generation



Wellness Coalition – Avalon East Website - www.wellnesscoalition-avaloneast.ca

Summary

Redesign of previous website to increase aesthetic value, simplify navigation and increase visibility towards search engines. The new site hosts a web-based membership database, updatable news section with RSS feeds, and an on-line calendar.

Key Features

- ✦ Membership database listing, use JavaScript to encode/decode email addresses, in an effort to reduce acquisition from spam bots.
- ✦ Uses custom built PHP Singleton object for site template

Caveats

- ✦ CSS display issues.
- ✦ Program logic when rendering null addresses in membership listing.

Future plans may include fixing current issues, removing the forum, optimizing site for 1024x768 screen size, and moving calendar to the Google Calendar API with a custom-build Zend Framework interface.

Single Parents Association of Newfoundland (SPAN) Web-design Consultant / Return to Work Mentor

Summary

Consult and mentor a graphic designer/web developer hired by SPAN via a Federal Initiative that helps give experience to an individual after a hiatus in their careers. SPAN is not a web/graphic design facility and their realization was that a consultant/mentor was needed. Consultation services include interviewing prospective job seekers, purchasing of hardware/software needs, and domain-name/site purchasing. Mentoring services include training, troubleshooting and acting as a liaison to move through personal preferences of design and towards a common aesthetic goal.

Products and Services

Website Creation

Most websites listed here are backed by Joomla CMS or a custom build PHP template script. Some of these websites may have outdated material.

- ✦ Barry L. Green – www.onepower.ca
- ✦ Buckmaster's Circle Community Centre – www.bmcc.nf.ca
- ✦ Froude Avenue Community Centre – www.froude.ca
- ✦ MacMorran Community Centre – www.macmorran.ca
- ✦ St. Teresa's Parish – www.stteresa.ca
- ✦ Community Centre Alliance – www.ccanl.ca
- ✦ Parenting Essentials – www.parentingessentials.ca
- ✦ Parenting Skills Project - <http://www.parentingskillsproject.com>

Website and Email Hosting Services

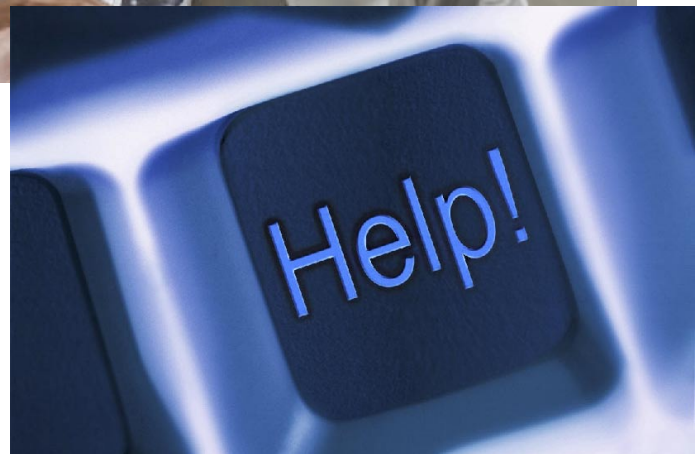
Provide customized hosting solutions for various clients. Services are hosted on a private hosted server to allow more control over the solutions we can provide.

- ✦ Pop and IMAP mail functionality (Cyrus/Postfix)
- ✦ Webmail support
- ✦ Groupware support
- ✦ PHPList support
- ✦ Apache Server with PHP, Ruby and Perl Support
- ✦ Bind DNS
- ✦ MySQL Database Backend

Consultation Services and Linux Server Integration

Consultation services include, purchasing strategies and best use practices when it comes to meeting the needs of today's office. Integration of Linux Server based technologies into Windows based Office environments, for lower TCO with regards to licensing.

- ✦ Samba - Domain Controller, File Server and Shared Access.
- ✦ DansGuardian – Content Filtering Proxy.
- ✦ RDP technologies for remote desktop.
- ✦ Optimization of Windows Operating Systems.
- ✦ Low memory foot-print security software
- ✦ Data Security





www.itmacs.ca

ITMACS